

MATERIAL SPECIFICATION SHEET

Pressure Switches



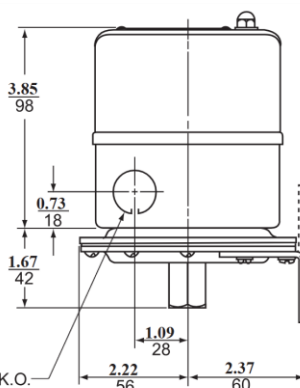
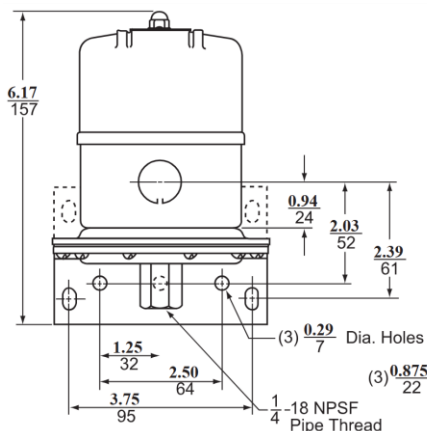
Pressure switches are designed for the control of electrically driven water pumps, acting as an automatic on/off switch.

PUMPTROL™
from Telemecanique Sensors (TES),
part of the YAGEO Group

Product Information:

- Diaphragm actuated
- Differential increases with range
- Contacts open on increased pressure
- General purpose enclosure NEMA Type 1
- Manufactured in an ISO 9001 facility
- 1-Year Warranty

Environment	Types: FSG/ FYG/G
Conforming to standards	UL 508, NSF/ANSI/CAN 61, NSF/ANSI/CAN 372
Product approvals	UL, CSA Certified
Degree of protection	IP20, NEMA Type 1 (Types F•G).
Operating position	IP20 and NEMA Type 1 in any position
Operating rate	10 cycles/m
Repeat accuracy	±3% of the range
Fluids controls	Fresh water



Type	Differential	Application / Use Case	Notes
FSG/ FYG	Adjustable	General-purpose water pump & compressor applications. Similar to FSG, used where slightly higher pressures are needed	2-pole, 2 N.C. contacts
G	Adjustable	Heavy-duty, industrial-grade; suitable for air or water systems	2-pole, 2 N.C. contacts; broader pressure and enclosure range

Component	Material
Cover	Polypropylene or Noryl® thermoplastic resin (Type 3R equivalent)
Diaphragm	Nitrile rubber (NBR) or equivalent
Flange / Fluid Entry	Zinc-plated metal or equivalent corrosion-resistant alloy
Enclosure	Molded plastic, rated IP20 or NEMA 1; optional NEMA 3R metal/plastic housing
Electrical Terminals	Screw-clamp type, accepts up to 10 AWG