

FIP Tee Black

| CB Supplies Part # | Description | UPC Code | Inner | Master | List Price |
|--------------------|---------------------------|-------------|-------|--------|------------|
| 451001000 | 1/8 FIP TEE BLK/MAL | 77894245001 | 120 | 480 | \$48.50 |
| 451001002 | 1/4 FIP TEE BLK/MAL | 77894245002 | 75 | 300 | \$48.50 |
| 451001004 | 3/8 FIP TEE BLK/MAL | 77894245003 | 45 | 180 | \$48.50 |
| 451001005 | 1/2 FIP TEE BLK/MAL | 77894245004 | 40 | 120 | \$39.97 |
| 451001007 | 3/4 FIP TEE BLK/MAL | 77894245005 | 35 | 70 | \$57.20 |
| 451001010 | 1 FIP TEE BLK/MAL | 77894245006 | 20 | 40 | \$90.36 |
| 451001012 | 1 1/4 FIP TEE BLK/MAL | 77894245007 | 14 | 28 | \$135.63 |
| 451001015 | 1 1/2 FIP TEE BLK/MAL | 77894245008 | 12 | 24 | \$173.89 |
| 451001020 | 2 FIP TEE BLK/MAL | 77894245009 | 8 | 16 | \$260.64 |
| 451001025 | 2 1/2 FIP TEE BLK/MAL | 77894245010 | 4 | 8 | \$616.55 |
| 451001030 | 3 FIP TEE BLK/MAL | 77894245011 | 6 | 6 | \$809.57 |
| 451001031 | 1/4 X 1/8 FIP TEE BLK/MAL | 77894245569 | 25 | 300 | \$77.66 |
| 451001040 | 4 FIP TEE BLK/MAL | 77894245012 | 2 | 2 | \$1,465.15 |
| 451001057 | 3/8 X 1/4 FIP TEE BLK/MAL | 77894245571 | 40 | 160 | \$77.66 |
| 451001060 | 6 FIP TEE BLK/MAL | 77894245572 | 1 | 1 | \$5,204.11 |



Reducing FIP Tee Black

| CB Supplies Part # | Description | UPC Code | Inner | Master | List Price |
|--------------------|---------------------------------|-------------|-------|--------|------------|
| 451001065 | 1/2 X 1/4 X 1/2 FIP TEE BLK/MAL | 77894245749 | 45 | 90 | \$65.74 |
| 451001071 | 1/2 X 1/8 FIP TEE BLK/MAL | 77894245573 | 40 | 160 | \$65.74 |
| 451001072 | 1/2 X 1/4 FIP TEE BLK/MAL | 77894245013 | 40 | 160 | \$65.74 |
| 451001074 | 1/2 X 3/8 FIP TEE BLK/MAL | 77894245014 | 40 | 160 | \$65.74 |
| 451001076 | 1/2 X 3/4 FIP TEE BLK/MAL | 77894245015 | 30 | 120 | \$78.99 |
| 451001077 | 1/2 X 1 FIP TEE BLK/MAL | 77894245016 | 25 | 100 | \$121.41 |
| 451001090 | 3/4 X 1/2 X 1/2 FIP TEE BLK/MAL | 77894245017 | 25 | 100 | \$78.99 |
| 451001092 | 3/4 X 1/2 X 3/4 FIP TEE BLK/MAL | 77894245018 | 20 | 80 | \$78.99 |
| 451001093 | 3/4 X 1/2 X 1 FIP TEE BLK/MAL | 77894245515 | 18 | 72 | \$121.41 |
| 451001098 | 3/4 X 1/4 FIP TEE BLK/MAL | 77894245019 | 25 | 100 | \$78.99 |
| 451001099 | 3/4 X 3/8 FIP TEE BLK/MAL | 77894245020 | 25 | 100 | \$82.40 |
| 451001101 | 3/4 X 1/2 FIP TEE BLK/MAL | 77894245021 | 20 | 80 | \$71.23 |
| 451001104 | 3/4 X 1 FIP TEE BLK/MAL | 77894245022 | 20 | 80 | \$121.41 |
| 451001119 | 1 X 1/2 X 1/2 FIP TEE BLK/MAL | 77894245023 | 20 | 80 | \$121.41 |
| 451001121 | 1 X 1/2 X 3/4 FIP TEE BLK/MAL | 77894245024 | 20 | 80 | \$121.41 |
| 451001122 | 1 X 1/2 X 1 FIP TEE BLK/MAL | 77894245025 | 15 | 60 | \$121.41 |
| 451001124 | 1 X 3/4 X 1/2 FIP TEE BLK/MAL | 77894245026 | 20 | 80 | \$121.41 |
| 451001125 | 1 X 3/4 X 3/4 FIP TEE BLK/MAL | 77894245027 | 15 | 60 | \$121.41 |
| 451001126 | 1 X 3/4 X 1 FIP TEE BLK/MAL | 77894245028 | 15 | 60 | \$121.41 |
| 451001128 | 1 X 1/4 FIP TEE BLK/MAL | 77894245029 | 20 | 80 | \$121.41 |
| 451001129 | 1 X 3/8 FIP TEE BLK/MAL | 77894245030 | 15 | 60 | \$121.41 |
| 451001130 | 1 X 1/2 FIP TEE BLK/MAL | 77894245031 | 15 | 60 | \$109.48 |



Reducing FIP Tee Black



| CB Supplies Part # | Description | UPC Code | Inner | Master | List Price |
|--------------------|---------------------------------------|-------------|-------|--------|------------|
| 451001131 | 1 X 3/4 FIP TEE BLK/MAL | 77894245032 | 12 | 48 | \$109.48 |
| 451001132 | 1 X 1 1/4 FIP TEE BLK/MAL | 77894245033 | 11 | 44 | \$182.96 |
| 451001133 | 1 X 1 1/2 FIP TEE BLK/MAL | 77894245034 | 9 | 36 | \$231.08 |
| 451001134 | 1 X 2 FIP TEE BLK/MAL | 77894245756 | 12 | 60 | \$231.08 |
| 451001149 | 1 1/4 X 1/2 X 1/2 FIP TEE BLK/MAL | 77894245548 | 25 | 50 | \$182.96 |
| 451001150 | 1 1/4 X 1/2 X 3/4 FIP TEE BLK/MAL | 77894245574 | 25 | 50 | \$182.96 |
| 451001151 | 1 1/4 X 1/2 X 1 FIP TEE BLK/MAL | 77894245035 | 20 | 40 | \$182.96 |
| 451001152 | 1 1/4 X 1/2 X 1 1/4 FIP TEE BLK/MAL | 77894245036 | 20 | 40 | \$182.96 |
| 451001154 | 1 1/4 X 3/4 X 1/2 FIP TEE BLK/MAL | 77894245567 | 10 | 40 | \$182.96 |
| 451001155 | 1 1/4 X 3/4 X 3/4 FIP TEE BLK/MAL | 77894245037 | 10 | 40 | \$182.96 |
| 451001156 | 1 1/4 X 3/4 X 1 FIP TEE BLK/MAL | 77894245038 | 10 | 40 | \$182.96 |
| 451001157 | 1 1/4 X 3/4 X 1 1/4 FIP TEE BLK/MAL | 77894245039 | 10 | 40 | \$182.96 |
| 451001159 | 1 1/4 X 1 X 1/2 FIP TEE BLK/MAL | 77894245040 | 20 | 40 | \$182.96 |
| 451001160 | 1 1/4 X 1 X 3/4 FIP TEE BLK/MAL | 77894245041 | 20 | 40 | \$165.17 |
| 451001161 | 1 1/4 X 1 X 1 FIP TEE BLK/MAL | 77894245042 | 20 | 40 | \$182.96 |
| 451001162 | 1 1/4 X 1 X 1 1/4 FIP TEE BLK/MAL | 77894245043 | 15 | 30 | \$182.96 |
| 451001165 | 1 1/4 X 3/8 FIP TEE BLK/MAL | 77894245517 | 20 | 40 | \$182.96 |
| 451001166 | 1 1/4 X 1/2 FIP TEE BLK/MAL | 77894245044 | 20 | 40 | \$182.96 |
| 451001167 | 1 1/4 X 3/4 FIP TEE BLK/MAL | 77894245045 | 20 | 40 | \$182.96 |
| 451001168 | 1 1/4 X 1 FIP TEE BLK/MAL | 77894245046 | 20 | 40 | \$182.96 |
| 451001169 | 1 1/4 X 1 1/2 FIP TEE BLK/MAL | 77894245518 | 12 | 24 | \$231.08 |
| 451001170 | 1 1/4 X 2 FIP TEE BLK/MAL | 77894245047 | 8 | 32 | \$328.45 |
| 451001190 | 1 1/2 X 1/2 X 3/4 FIP TEE BLK/MAL | 77894245575 | 12 | 24 | \$231.08 |
| 451001191 | 1 1/2 X 1/2 X 1 FIP TEE BLK/MAL | 77894245519 | 12 | 24 | \$231.08 |
| 451001192 | 1 1/2 X 1/2 X 1 1/4 FIP TEE BLK/MAL | 77894245791 | 12 | 24 | \$231.08 |
| 451001193 | 1 1/2 X 1/2 X 1 1/2 FIP TEE BLK/MAL | 77894245048 | 12 | 24 | \$231.08 |
| 451001194 | 1 1/2 X 3/4 X 1/2 FIP TEE BLK/MAL | 77894245049 | 15 | 30 | \$231.08 |
| 451001195 | 1 1/2 X 3/4 X 3/4 FIP TEE BLK/MAL | 77894245735 | 15 | 30 | \$231.08 |
| 451001197 | 1 1/2 X 3/4 X 1 1/4 FIP TEE BLK/MAL | 77894245576 | 12 | 24 | \$231.08 |
| 451001198 | 1 1/2 X 3/4 X 1 1/2 FIP TEE BLK/MAL | 77894245050 | 12 | 24 | \$231.08 |
| 451001199 | 1 1/2 X 1 X 1/2 FIP TEE BLK/MAL | 77894245577 | 13 | 52 | \$231.08 |
| 451001200 | 1 1/2 X 1 X 3/4 FIP TEE BLK/MAL | 77894245578 | 15 | 30 | \$231.08 |
| 451001201 | 1 1/2 X 1 X 1 FIP TEE BLK/MAL | 77894245051 | 15 | 30 | \$231.08 |
| 451001202 | 1 1/2 X 1 X 1 1/4 FIP TEE BLK/MAL | 77894245736 | 12 | 24 | \$231.08 |
| 451001203 | 1 1/2 X 1 X 1 1/2 FIP TEE BLK/MAL | 77894245052 | 12 | 24 | \$231.08 |
| 451001204 | 1 1/2 X 1 1/4 X 1/2 FIP TEE BLK/MAL | 77894245053 | 12 | 24 | \$231.08 |
| 451001205 | 1 1/2 X 1 1/4 X 3/4 FIP TEE BLK/MAL | 77894245054 | 12 | 24 | \$231.08 |
| 451001206 | 1 1/2 X 1 1/4 X 1 FIP TEE BLK/MAL | 77894245055 | 12 | 24 | \$231.08 |
| 451001207 | 1 1/2 X 1 1/4 X 1 1/4 FIP TEE BLK/MAL | 77894245056 | 12 | 24 | \$231.08 |
| 451001208 | 1 1/2 X 1 1/4 X 1 1/2 FIP TEE BLK/MAL | 77894245737 | 12 | 24 | \$231.08 |
| 451001211 | 1 1/2 X 3/8 FIP TEE BLK/MAL | 77894245579 | | | \$231.08 |
| 451001212 | 1 1/2 X 1/2 FIP TEE BLK/MAL | 77894245057 | 18 | 36 | \$231.08 |
| 451001213 | 1 1/2 X 3/4 FIP TEE BLK/MAL | 77894245058 | 15 | 30 | \$208.56 |
| 451001214 | 1 1/2 X 1 FIP TEE BLK/MAL | 77894245059 | 10 | 30 | \$231.08 |
| 451001215 | 1 1/2 X 1 1/4 FIP TEE BLK/MAL | 77894245060 | 12 | 24 | \$231.08 |
| 451001216 | 1 1/2 X 2 FIP TEE BLK/MAL | 77894245061 | 8 | 16 | \$327.51 |
| 451001221 | 2 X 1/2 X 2 FIP TEE BLK/MAL | 77894245062 | 8 | 16 | \$327.51 |
| 451001227 | 2 X 3/4 X 2 FIP TEE BLK/MAL | 77894245063 | 8 | 16 | \$327.51 |
| 451001230 | 2 X 1 X 1 FIP TEE BLK/MAL | 77894245064 | 12 | 24 | \$327.51 |
| 451001231 | 2 X 1 X 1 1/2 FIP TEE BLK/MAL | 77894245520 | 10 | 20 | \$327.51 |

Reducing FIP Tee Black



| CB Supplies Part # | Description | UPC Code | Inner | Master | List Price |
|--------------------|-----------------------------------|-------------|-------|--------|------------|
| 451001233 | 2 X 1 X 2 FIP TEE BLK/MAL | 77894245065 | 8 | 16 | \$327.51 |
| 451001236 | 2 X 1 1/4 X 1 FIP TEE BLK/MAL | 77894245738 | 8 | 16 | \$327.51 |
| 451001238 | 2 X 1 1/4 X 1 1/4 FIP TEE BLK/MAL | 77894245066 | 8 | 16 | \$327.51 |
| 451001239 | 2 X 1 1/4 X 1 1/2 FIP TEE BLK/MAL | 77894245739 | 8 | 16 | \$327.51 |
| 451001240 | 2 X 1 1/4 X 2 FIP TEE BLK/MAL | 77894245067 | 8 | 16 | \$327.51 |
| 451001241 | 2 X 1 1/2 X 1/2 TEE BLK | 77894245580 | 8 | 16 | \$327.51 |
| 451001242 | 2 X 1 1/2 X 3/4 FIP TEE BLK/MAL | 77894245068 | 10 | 20 | \$327.51 |
| 451001243 | 2 X 1 1/2 X 1 FIP TEE BLK/MAL | 77894245069 | 10 | 20 | \$327.51 |
| 451001244 | 2 X 1 1/2 X 1 1/4 FIP TEE BLK/MAL | 77894245070 | 8 | 16 | \$327.51 |
| 451001245 | 2 X 1 1/2 X 1 1/2 FIP TEE BLK/MAL | 77894245581 | 8 | 16 | \$327.51 |
| 451001246 | 2 X 1 1/2 X 2 FIP TEE BLK/MAL | 77894245071 | 8 | 16 | \$327.51 |
| 451001250 | 2 X 1/2 FIP TEE BLK/MAL | 77894245072 | 10 | 20 | \$327.51 |
| 451001251 | 2 X 3/4 FIP TEE BLK/MAL | 77894245073 | 10 | 20 | \$295.31 |
| 451001252 | 2 X 1 FIP TEE BLK/MAL | 77894245074 | 10 | 20 | \$295.31 |
| 451001253 | 2 X 1 1/4 FIP TEE BLK/MAL | 77894245075 | 8 | 16 | \$327.51 |
| 451001254 | 2 X 1 1/2 FIP TEE BLK/MAL | 77894245076 | 8 | 16 | \$327.51 |
| 451001285 | 2 1/2 X 2 X 2 FIP TEE BLK/MAL | 77894245521 | 8 | 16 | \$676.60 |
| 451001286 | 2 1/2 X 2 X 2 1/2 FIP TEE BLK/MAL | 77894245554 | 8 | 16 | \$676.60 |
| 451001287 | 2 1/2 X 1/2 FIP TEE BLK/MAL | 77894245582 | 6 | 12 | \$676.60 |
| 451001288 | 2 1/2 X 3/4 FIP TEE BLK/MAL | 77894245740 | 6 | 12 | \$676.60 |
| 451001289 | 2 1/2 X 1 FIP TEE BLK/MAL | 77894245741 | 5 | 10 | \$676.60 |
| 451001290 | 2 1/2 X 1 1/4 FIP TEE BLK/MAL | 77894245402 | 5 | 10 | \$676.60 |
| 451001291 | 2 1/2 X 1 1/2 FIP TEE BLK/MAL | 77894245403 | 5 | 10 | \$676.60 |
| 451001292 | 2 1/2 X 2 FIP TEE BLK/MAL | 77894245404 | 4 | 8 | \$676.60 |
| 451001333 | 3 X 1/2 FIP TEE BLK/MAL | 77894245583 | 3 | 9 | \$966.21 |
| 451001334 | 3 X 3/4 FIP TEE BLK/MAL | 77894245522 | 3 | 9 | \$966.21 |
| 451001335 | 3 X 1 FIP TEE BLK/MAL | 77894245405 | 3 | 6 | \$966.21 |
| 451001336 | 3 X 1 1/4 FIP TEE BLK/MAL | 77894245406 | 3 | 6 | \$966.21 |
| 451001337 | 3 X 1 1/2 FIP TEE BLK/MAL | 77894245584 | 3 | 6 | \$966.21 |
| 451001338 | 3 X 2 FIP TEE BLK/MAL | 77894245077 | 3 | 6 | \$966.21 |
| 451001339 | 3 X 2 1/2 FIP TEE BLK/MAL | 77894245585 | 3 | 6 | \$966.21 |
| 451001417 | 4 X 1 FIP TEE BLK/MAL | 77894245593 | 2 | 4 | \$1,835.47 |
| 451001418 | 4 X 1 1/4 FIP TEE BLK/MAL | 77894245594 | 5 | 10 | \$1,835.47 |
| 451001420 | 4 X 2 FIP TEE BLK/MAL | 77894245407 | 3 | 3 | \$1,835.47 |
| 451001421 | 4 X 2 1/2 FIP TEE BLK/MAL | 77894245596 | 3 | 3 | \$1,835.47 |
| 451001422 | 4 X 3 FIP TEE BLK/MAL | 77894245597 | 3 | 3 | \$1,835.47 |

FIP 90 Elbow Black

| CB Supplies Part # | Description | UPC Code | Inner | Master | List Price |
|--------------------|--------------------------------|-------------|-------|--------|------------|
| 451006000 | 1/8 FIP 90 ELBOW BLK/MAL | 77894245078 | 50 | 600 | \$38.45 |
| 451006002 | 1/4 FIP 90 ELBOW BLK/MAL | 77894245079 | 35 | 420 | \$38.45 |
| 451006004 | 3/8 FIP 90 ELBOW BLK/MAL | 77894245080 | 90 | 360 | \$38.45 |
| 451006005 | 1/2 FIP 90 ELBOW BLK/MAL | 77894245081 | 50 | 200 | \$31.26 |
| 451006007 | 3/4 FIP 90 ELBOW BLK/MAL | 77894245082 | 35 | 105 | \$45.27 |
| 451006010 | 1 FIP 90 ELBOW BLK/MAL | 77894245083 | 20 | 60 | \$69.51 |
| 451006012 | 1 1/4 FIP 90 ELBOW BLK/MAL | 77894245084 | 20 | 40 | \$104.36 |
| 451006015 | 1 1/2 FIP 90 ELBOW BLK/MAL | 77894245085 | 15 | 30 | \$139.01 |
| 451006020 | 2 FIP 90 ELBOW BLK/MAL | 77894245086 | 8 | 16 | \$208.56 |
| 451006025 | 2 1/2 FIP 90 ELBOW BLK/MAL | 77894245087 | 12 | 12 | \$404.79 |
| 451006030 | 3 FIP 90 ELBOW BLK/MAL | 77894245088 | 8 | 8 | \$616.55 |
| 451006031 | 1/4 X 1/8 FIP 90 ELBOW BLK/MAL | 77894245523 | 90 | 360 | \$46.02 |
| 451006040 | 4 FIP 90 ELBOW BLK/MAL | 77894245089 | 2 | 2 | \$1,117.94 |
| 451006055 | 3/8 X 1/8 FIP 90 ELBOW BLK/MAL | 77894245598 | 90 | 360 | \$46.02 |
| 451006057 | 3/8 X 1/4 FIP 90 ELBOW BLK/MAL | 77894245599 | 90 | 360 | \$46.02 |
| 451006060 | 6 FIP 90 ELBOW BLK/MAL | 77894245409 | 1 | 1 | \$4,433.17 |

Reducing FIP 90 Elbow Black

| CB Supplies Part # | Description | UPC Code | Inner | Master | List Price |
|--------------------|------------------------------------|-------------|-------|--------|------------|
| 451006070 | 1/2 X 1/8 FIP 90 ELBOW BLK/MAL | 77894245600 | 60 | 240 | \$42.24 |
| 451006072 | 1/2 X 1/4 FIP 90 ELBOW BLK/MAL | 77894245090 | 60 | 240 | \$42.24 |
| 451006074 | 1/2 X 3/8 FIP 90 ELBOW BLK/MAL | 77894245091 | 60 | 240 | \$42.24 |
| 451006098 | 3/4 X 1/4 FIP 90 ELBOW BLK/MAL | 77894245601 | 40 | 160 | \$55.90 |
| 451006099 | 3/4 X 3/8 FIP 90 ELBOW BLK/MAL | 77894245568 | 40 | 160 | \$55.90 |
| 451006101 | 3/4 X 1/2 FIP 90 ELBOW BLK/MAL | 77894245092 | 40 | 160 | \$55.90 |
| 451006129 | 1 X 3/8 FIP 90 ELBOW BLK/MAL | 77894245602 | 25 | 150 | \$85.03 |
| 451006130 | 1 X 1/2 FIP 90 ELBOW BLK/MAL | 77894245093 | 25 | 100 | \$85.03 |
| 451006131 | 1 X 3/4 FIP 90 ELBOW BLK/MAL | 77894245094 | 50 | 100 | \$85.03 |
| 451006166 | 1 1/4 X 1/2 FIP 90 ELBOW BLK/MAL | 77894245095 | 20 | 80 | \$136.95 |
| 451006167 | 1 1/4 X 3/4 FIP 90 ELBOW BLK/MAL | 77894245096 | 15 | 60 | \$136.95 |
| 451006168 | 1 1/4 X 1 FIP 90 ELBOW BLK/MAL | 77894245097 | 10 | 40 | \$136.95 |
| 451006212 | 1 1/2 X 1/2 FIP 90 ELBOW BLK/MAL | 77894245098 | 15 | 60 | \$169.74 |
| 451006213 | 1 1/2 X 3/4 FIP 90 ELBOW BLK/MAL | 77894245099 | 10 | 40 | \$169.74 |
| 451006214 | 1 1/2 X 1 FIP 90 ELBOW BLK/MAL | 77894245100 | 10 | 40 | \$169.74 |
| 451006215 | 1 1/2 X 1 1/4 FIP 90 ELBOW BLK/MAL | 77894245101 | 15 | 30 | \$169.74 |
| 451006250 | 2 X 1/2 FIP 90 ELBOW BLK/MAL | 77894245410 | 10 | 40 | \$250.97 |
| 451006251 | 2 X 3/4 FIP 90 ELBOW BLK/MAL | 77894245102 | 9 | 36 | \$250.97 |
| 451006252 | 2 X 1 FIP 90 ELBOW BLK/MAL | 77894245103 | 14 | 28 | \$250.97 |
| 451006253 | 2 X 1 1/4 FIP 90 ELBOW BLK/MAL | 77894245104 | 10 | 20 | \$250.97 |
| 451006254 | 2 X 1 1/2 FIP 90 ELBOW BLK/MAL | 77894245105 | 10 | 20 | \$250.97 |
| 451006291 | 2 1/2 X 1 1/2 FIP 90 ELBOW BLK/MAL | 77894245106 | 6 | 12 | \$520.52 |
| 451006292 | 2 1/2 X 2 FIP 90 ELBOW BLK/MAL | 77894245107 | 6 | 12 | \$520.52 |
| 451006337 | 3 X 1 1/2 FIP 90 ELBOW BLK/MAL | 77894245604 | 4 | 8 | \$871.33 |
| 451006338 | 3 X 2 FIP 90 ELBOW BLK/MAL | 77894245108 | 4 | 8 | \$871.33 |
| 451006339 | 3 X 2 1/2 FIP 90 ELBOW BLK/MAL | 77894245524 | 4 | 8 | \$871.33 |
| 451006420 | 4 X 2 FIP 90 ELBOW BLK/MAL | 77894245605 | | 6 | \$1,742.28 |
| 451006422 | 4 X 3 FIP 90 ELBOW BLK/MAL | 77894245411 | 2 | 4 | \$1,742.28 |

M X F 90 Street Elbow Black



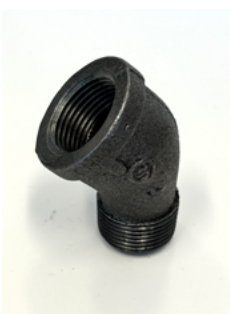
| CB Supplies Part # | Description | UPC Code | Inner | Master | List Price |
|--------------------|-------------------------------------|-------------|-------|--------|------------|
| 451009000 | 1/8 M X F 90 STREET ELBOW BLK/MAL | 77894245109 | 60 | 720 | \$42.24 |
| 451009002 | 1/4 M X F 90 STREET ELBOW BLK/MAL | 77894245110 | 35 | 420 | \$42.24 |
| 451009004 | 3/8 M X F 90 STREET ELBOW BLK/MAL | 77894245111 | 60 | 240 | \$42.24 |
| 451009005 | 1/2 M X F 90 STREET ELBOW BLK/MAL | 77894245112 | 60 | 180 | \$38.45 |
| 451009007 | 3/4 M X F 90 STREET ELBOW BLK/MAL | 77894245113 | 35 | 105 | \$55.90 |
| 451009010 | 1 M X F 90 STREET ELBOW BLK/MAL | 77894245114 | 45 | 90 | \$82.97 |
| 451009012 | 1 1/4 M X F 90 STREET ELBOW BLK/MAL | 77894245115 | 25 | 50 | \$144.70 |
| 451009015 | 1 1/2 M X F 90 STREET ELBOW BLK/MAL | 77894245116 | 9 | 27 | \$177.50 |
| 451009020 | 2 M X F 90 STREET ELBOW BLK/MAL | 77894245117 | 8 | 16 | \$250.97 |
| 451009025 | 2 1/2 M X F 90 STREET ELBOW BLK/MAL | 77894245118 | 5 | 10 | \$559.17 |
| 451009030 | 3 M X F 90 STREET ELBOW BLK/MAL | 77894245119 | 8 | 8 | \$867.34 |
| 451009040 | 4 M X F 90 STREET ELBOW BLK/MAL | 77894245120 | 4 | 4 | \$1,445.44 |

FIP 45 Elbow Black



| CB Supplies Part # | Description | UPC Code | Inner | Master | List Price |
|--------------------|----------------------------|-------------|-------|--------|------------|
| 451017000 | 1/8 FIP 45 ELBOW BLK/MAL | 77894245121 | 50 | 600 | \$42.24 |
| 451017002 | 1/4 FIP 45 ELBOW BLK/MAL | 77894245122 | 30 | 360 | \$42.24 |
| 451017004 | 3/8 FIP 45 ELBOW BLK/MAL | 77894245123 | 75 | 300 | \$42.24 |
| 451017005 | 1/2 FIP 45 ELBOW BLK/MAL | 77894245124 | 50 | 200 | \$31.26 |
| 451017007 | 3/4 FIP 45 ELBOW BLK/MAL | 77894245125 | 40 | 120 | \$47.17 |
| 451017010 | 1 FIP 45 ELBOW BLK/MAL | 77894245126 | 20 | 60 | \$69.51 |
| 451017012 | 1 1/4 FIP 45 ELBOW BLK/MAL | 77894245127 | 20 | 40 | \$113.27 |
| 451017015 | 1 1/2 FIP 45 ELBOW BLK/MAL | 77894245128 | 10 | 30 | \$139.01 |
| 451017020 | 2 FIP 45 ELBOW BLK/MAL | 77894245129 | 12 | 24 | \$208.56 |
| 451017025 | 2 1/2 FIP 45 ELBOW BLK/MAL | 77894245130 | 12 | 12 | \$481.88 |
| 451017030 | 3 FIP 45 ELBOW BLK/MAL | 77894245131 | 10 | 10 | \$732.50 |
| 451017040 | 4 FIP 45 ELBOW BLK/MAL | 77894245133 | 4 | 4 | \$1,253.02 |
| 451017060 | 6 FIP 45 ELBOW BLK/MAL | 77894245412 | 1 | 1 | \$7,109.67 |

M X F 45 Street Elbow Black



| CB Supplies Part # | Description | UPC Code | Inner | Master | List Price |
|--------------------|-------------------------------------|-------------|-------|--------|------------|
| 451018000 | 1/8 M X F 45 STREET ELBOW BLK/MAL | 77894245134 | 70 | 840 | \$57.96 |
| 451018002 | 1/4 M X F 45 STREET ELBOW BLK/MAL | 77894245135 | 40 | 480 | \$57.96 |
| 451018004 | 3/8 M X F 45 STREET ELBOW BLK/MAL | 77894245136 | 100 | 400 | \$57.96 |
| 451018005 | 1/2 M X F 45 STREET ELBOW BLK/MAL | 77894245137 | 75 | 225 | \$57.96 |
| 451018007 | 3/4 M X F 45 STREET ELBOW BLK/MAL | 77894245138 | 40 | 120 | \$88.64 |
| 451018010 | 1 M X F 45 STREET ELBOW BLK/MAL | 77894245139 | 25 | 75 | \$117.44 |
| 451018012 | 1 1/4 M X F 45 STREET ELBOW BLK/MAL | 77894245140 | 10 | 40 | \$193.02 |
| 451018015 | 1 1/2 M X F 45 STREET ELBOW BLK/MAL | 77894245141 | 10 | 30 | \$231.08 |
| 451018020 | 2 M X F 45 STREET ELBOW BLK/MAL | 77894245142 | 12 | 24 | \$385.46 |
| 451018025 | 2 1/2 M X F 45 STREET ELBOW BLK/MAL | 77894245143 | 6 | 12 | \$770.94 |
| 451018030 | 3 M X F 45 STREET ELBOW BLK/MAL | 77894245144 | 3 | 6 | \$1,156.59 |

FIP Coupling Black



| CB Supplies Part # | Description | UPC Code | Inner | Master | List Price |
|--------------------|--------------------------------|-------------|-------|--------|------------|
| 451029000 | 1/8 FIP COUPLING BLK/MAL | 77894245145 | 70 | 840 | \$28.80 |
| 451029002 | 1/4 FIP COUPLING BLK/MAL | 77894245146 | 40 | 480 | \$28.80 |
| 451029004 | 3/8 FIP COUPLING BLK/MAL | 77894245147 | 40 | 480 | \$28.80 |
| 451029005 | 1/2 FIP COUPLING BLK/MAL | 77894245148 | 60 | 240 | \$24.45 |
| 451029007 | 3/4 FIP COUPLING BLK/MAL | 77894245149 | 50 | 150 | \$33.13 |
| 451029010 | 1 FIP COUPLING BLK/MAL | 77894245150 | 25 | 100 | \$55.70 |
| 451029012 | 1 1/4 FIP COUPLING BLK/MAL | 77894245151 | 16 | 64 | \$78.43 |
| 451029015 | 1 1/2 FIP COUPLING BLK/MAL | 77894245152 | 18 | 36 | \$95.67 |
| 451029020 | 2 FIP COUPLING BLK/MAL | 77894245153 | 12 | 24 | \$147.93 |
| 451029025 | 2 1/2 FIP COUPLING BLK/MAL | 77894245154 | 8 | 16 | \$289.05 |
| 451029030 | 3 FIP COUPLING BLK/MAL | 77894245155 | 12 | 12 | \$424.11 |
| 451029031 | 1/4 X 1/8 FIP COUPLING BLK/MAL | 77894245156 | 50 | 600 | \$33.13 |
| 451029040 | 4 FIP COUPLING BLK/MAL | 77894245157 | 3 | 6 | \$693.65 |
| 451029055 | 3/8 X 1/8 FIP COUPLING BLK/MAL | 77894245158 | 35 | 420 | \$33.13 |
| 451029057 | 3/8 X 1/4 FIP COUPLING BLK/MAL | 77894245159 | 30 | 360 | \$33.13 |
| 451029060 | 6 FIP COUPLING BLK/MAL | 77894245607 | 1 | 2 | \$2,120.36 |

Reducing FIP Coupling Blk



| CB Supplies Part # | Description | UPC Code | Inner | Master | List Price |
|--------------------|------------------------------------|-------------|-------|--------|------------|
| 451029070 | 1/2 X 1/8 FIP COUPLING BLK/MAL | 77894245160 | 75 | 300 | \$33.13 |
| 451029072 | 1/2 X 1/4 FIP COUPLING BLK/MAL | 77894245161 | 75 | 300 | \$33.13 |
| 451029074 | 1/2 X 3/8 FIP COUPLING BLK/MAL | 77894245162 | 60 | 240 | \$33.13 |
| 451029096 | 3/4 X 1/8 FIP COUPLING BLK/MAL | 77894245525 | 70 | 210 | \$46.40 |
| 451029098 | 3/4 X 1/4 FIP COUPLING BLK/MAL | 77894245163 | 45 | 180 | \$46.40 |
| 451029099 | 3/4 X 3/8 FIP COUPLING BLK/MAL | 77894245164 | 45 | 180 | \$46.40 |
| 451029101 | 3/4 X 1/2 FIP COUPLING BLK/MAL | 77894245165 | 60 | 180 | \$41.68 |
| 451029128 | 1 X 1/4 FIP COUPLING BLK/MAL | 77894245166 | 45 | 135 | \$61.56 |
| 451029129 | 1 X 3/8 FIP COUPLING BLK/MAL | 77894245167 | 30 | 120 | \$61.56 |
| 451029130 | 1 X 1/2 FIP COUPLING BLK/MAL | 77894245168 | 30 | 120 | \$61.56 |
| 451029131 | 1 X 3/4 FIP COUPLING BLK/MAL | 77894245169 | 25 | 100 | \$55.70 |
| 451029166 | 1 1/4 X 1/2 FIP COUPLING BLK/MAL | 77894245170 | 25 | 75 | \$90.55 |
| 451029167 | 1 1/4 X 3/4 FIP COUPLING BLK/MAL | 77894245171 | 25 | 75 | \$90.55 |
| 451029168 | 1 1/4 X 1 FIP COUPLING BLK/MAL | 77894245172 | 15 | 60 | \$90.55 |
| 451029211 | 1 1/2 X 3/8 FIP COUPLING BLK/MAL | 77894245608 | 20 | 60 | \$108.15 |
| 451029212 | 1 1/2 X 1/2 FIP COUPLING BLK/MAL | 77894245173 | 20 | 60 | \$108.15 |
| 451029213 | 1 1/2 X 3/4 FIP COUPLING BLK/MAL | 77894245174 | 15 | 60 | \$108.15 |
| 451029214 | 1 1/2 X 1 FIP COUPLING BLK/MAL | 77894245175 | 25 | 50 | \$108.15 |
| 451029215 | 1 1/2 X 1 1/4 FIP COUPLING BLK/MAL | 77894245176 | 12 | 48 | \$108.15 |
| 451029250 | 2 X 1/2 FIP COUPLING BLK/MAL | 77894245177 | 12 | 36 | \$163.86 |
| 451029251 | 2 X 3/4 FIP COUPLING BLK/MAL | 77894245178 | 12 | 36 | \$163.86 |
| 451029252 | 2 X 1 FIP COUPLING BLK/MAL | 77894245179 | 12 | 36 | \$163.86 |
| 451029253 | 2 X 1 1/4 FIP COUPLING BLK/MAL | 77894245180 | 9 | 27 | \$163.86 |
| 451029254 | 2 X 1 1/2 FIP COUPLING BLK/MAL | 77894245181 | 9 | 27 | \$163.86 |
| 451029287 | 2 1/2 X 1/2 FIP COUPLING BLK/MAL | 77894245609 | 10 | 20 | \$308.17 |
| 451029288 | 2 1/2 X 3/4 FIP COUPLING BLK/MAL | 77894245610 | 10 | 20 | \$308.17 |
| 451029289 | 2 1/2 X 1 FIP COUPLING BLK/MAL | 77894245413 | 10 | 20 | \$308.17 |
| 451029290 | 2 1/2 X 1 1/4 FIP COUPLING BLK/MAL | 77894245182 | 10 | 20 | \$308.17 |
| 451029291 | 2 1/2 X 1 1/2 FIP COUPLING BLK/MAL | 77894245183 | 7 | 14 | \$308.17 |
| 451029292 | 2 1/2 X 2 FIP COUPLING BLK/MAL | 77894245184 | 7 | 14 | \$308.17 |

Reducing FIP Coupling Blk



| CB Supplies Part # | Description | UPC Code | Inner | Master | List Price |
|--------------------|--------------------------------|-------------|-------|--------|------------|
| 451029334 | 3 X 3/4 FIP COUPLING BLK/MAL | 77894245611 | 6 | 12 | \$481.88 |
| 451029335 | 3 X 1 FIP COUPLING BLK/MAL | 77894245185 | 6 | 12 | \$481.88 |
| 451029336 | 3 X 1 1/4 FIP COUPLING BLK/MAL | 77894245612 | 6 | 12 | \$481.88 |
| 451029337 | 3 X 1 1/2 FIP COUPLING BLK/MAL | 77894245186 | 6 | 12 | \$481.88 |
| 451029338 | 3 X 2 FIP COUPLING BLK/MAL | 77894245187 | 6 | 12 | \$481.88 |
| 451029339 | 3 X 2 1/2 FIP COUPLING BLK/MAL | 77894245188 | 5 | 10 | \$481.88 |
| 451029418 | 4 X 1 1/4 FIP COUPLING BLK/MAL | 77894245614 | 3 | 6 | \$888.94 |
| 451029419 | 4 X 1 1/2 FIP COUPLING BLK/MAL | 77894245615 | 3 | 6 | \$888.94 |
| 451029420 | 4 X 2 FIP COUPLING BLK/MAL | 77894245189 | 3 | 6 | \$888.94 |
| 451029421 | 4 X 2 1/2 FIP COUPLING BLK/MAL | 77894245616 | 3 | 6 | \$888.94 |
| 451029422 | 4 X 3 FIP COUPLING BLK/MAL | 77894245190 | 3 | 6 | \$888.94 |
| 451029623 | 6 X 4 FIP COUPLING BLK/MAL | 77894245414 | 2 | 4 | \$3,008.75 |

M X F Bushing Black



| CB Supplies Part # | Description | UPC Code | Inner | Master | List Price |
|--------------------|-------------------------------------|-------------|-------|--------|------------|
| 451037031 | 1/4 X 1/8 M X F BUSHING BLK/MAL | 77894245191 | 120 | 1440 | \$49.43 |
| 451037055 | 3/8 X 1/8 M X F BUSHING BLK/MAL | 77894245192 | 75 | 900 | \$49.43 |
| 451037057 | 3/8 X 1/4 M X F BUSHING BLK/MAL | 77894245193 | 75 | 900 | \$49.43 |
| 451037070 | 1/2 X 1/8 M X F BUSHING BLK/MAL | 77894245194 | 150 | 600 | \$28.80 |
| 451037072 | 1/2 X 1/4 M X F BUSHING BLK/MAL | 77894245195 | 150 | 600 | \$28.80 |
| 451037074 | 1/2 X 3/8 M X F BUSHING BLK/MAL | 77894245196 | 150 | 600 | \$28.80 |
| 451037096 | 3/4 X 1/8 M X F BUSHING BLK/MAL | 77894245197 | 75 | 300 | \$32.96 |
| 451037098 | 3/4 X 1/4 M X F BUSHING BLK/MAL | 77894245198 | 75 | 300 | \$32.96 |
| 451037099 | 3/4 X 3/8 M X F BUSHING BLK/MAL | 77894245199 | 75 | 300 | \$32.96 |
| 451037101 | 3/4 X 1/2 M X F BUSHING BLK/MAL | 77894245200 | 75 | 300 | \$32.96 |
| 451037127 | 1 X 1/8 M X F BUSHING BLK/MAL | 77894245415 | 50 | 200 | \$55.33 |
| 451037128 | 1 X 1/4 M X F BUSHING BLK/MAL | 77894245201 | 50 | 200 | \$48.50 |
| 451037129 | 1 X 3/8 M X F BUSHING BLK/MAL | 77894245202 | 50 | 200 | \$48.50 |
| 451037130 | 1 X 1/2 M X F BUSHING BLK/MAL | 77894245203 | 50 | 200 | \$43.57 |
| 451037131 | 1 X 3/4 M X F BUSHING BLK/MAL | 77894245204 | 50 | 200 | \$43.57 |
| 451037164 | 1 1/4 X 1/4 M X F BUSHING BLK/MAL | 77894245619 | 30 | 120 | \$77.28 |
| 451037165 | 1 1/4 X 3/8 M X F BUSHING BLK/MAL | 77894245416 | 30 | 120 | \$77.28 |
| 451037166 | 1 1/4 X 1/2 M X F BUSHING BLK/MAL | 77894245205 | 30 | 120 | \$77.28 |
| 451037167 | 1 1/4 X 3/4 M X F BUSHING BLK/MAL | 77894245206 | 30 | 120 | \$77.28 |
| 451037168 | 1 1/4 X 1 M X F BUSHING BLK/MAL | 77894245207 | 30 | 120 | \$69.51 |
| 451037209 | 1 1/2 X 1/8 M X F BUSHING BLK/MAL | 77894245620 | 25 | 75 | \$90.55 |
| 451037210 | 1 1/2 X 1/4 M X F BUSHING BLK/MAL | 77894245208 | 25 | 75 | \$90.55 |
| 451037211 | 1 1/2 X 3/8 M X F BUSHING BLK/MAL | 77894245621 | 25 | 75 | \$90.55 |
| 451037212 | 1 1/2 X 1/2 M X F BUSHING BLK/MAL | 77894245209 | 25 | 75 | \$90.55 |
| 451037213 | 1 1/2 X 3/4 M X F BUSHING BLK/MAL | 77894245210 | 25 | 75 | \$90.55 |
| 451037214 | 1 1/2 X 1 M X F BUSHING BLK/MAL | 77894245211 | 25 | 75 | \$90.55 |
| 451037215 | 1 1/2 X 1 1/4 M X F BUSHING BLK/MAL | 77894245212 | 25 | 75 | \$90.55 |

M X F Bushing Black



| CB Supplies Part # | Description | UPC Code | Inner | Master | List Price |
|--------------------|-------------------------------------|-------------|-------|--------|------------|
| 451037248 | 2 X 1/4 M X F BUSHING BLK/MAL | 77894245417 | 20 | 60 | \$125.22 |
| 451037249 | 2 X 3/8 M X F BUSHING BLK/MAL | 77894245622 | 20 | 60 | \$125.22 |
| 451037250 | 2 X 1/2 M X F BUSHING BLK/MAL | 77894245213 | 20 | 60 | \$125.22 |
| 451037251 | 2 X 3/4 M X F BUSHING BLK/MAL | 77894245214 | 20 | 60 | \$125.22 |
| 451037252 | 2 X 1 M X F BUSHING BLK/MAL | 77894245215 | 20 | 60 | \$125.22 |
| 451037253 | 2 X 1 1/4 M X F BUSHING BLK/MAL | 77894245216 | 20 | 60 | \$113.27 |
| 451037254 | 2 X 1 1/2 M X F BUSHING BLK/MAL | 77894245217 | 20 | 60 | \$113.27 |
| 451037287 | 2 1/2 X 1/2 M X F BUSHING BLK/MAL | 77894245623 | 15 | 30 | \$211.77 |
| 451037288 | 2 1/2 X 3/4 M X F BUSHING BLK/MAL | 77894245218 | 15 | 30 | \$211.77 |
| 451037289 | 2 1/2 X 1 M X F BUSHING BLK/MAL | 77894245219 | 15 | 30 | \$211.77 |
| 451037290 | 2 1/2 X 1 1/4 M X F BUSHING BLK/MAL | 77894245220 | 15 | 30 | \$211.77 |
| 451037291 | 2 1/2 X 1 1/2 M X F BUSHING BLK/MAL | 77894245221 | 15 | 30 | \$211.77 |
| 451037292 | 2 1/2 X 2 M X F BUSHING BLK/MAL | 77894245222 | 15 | 30 | \$211.77 |
| 451037334 | 3 X 3/4 M X F BUSHING BLK/MAL | 77894245526 | 6 | 12 | \$357.81 |
| 451037335 | 3 X 1 M X F BUSHING BLK/MAL | 77894245223 | 12 | 24 | \$308.17 |
| 451037336 | 3 X 1 1/4 M X F BUSHING BLK/MAL | 77894245224 | 12 | 24 | \$308.17 |
| 451037337 | 3 X 1 1/2 M X F BUSHING BLK/MAL | 77894245225 | 12 | 24 | \$308.17 |
| 451037338 | 3 X 2 M X F BUSHING BLK/MAL | 77894245226 | 12 | 24 | \$308.17 |
| 451037339 | 3 X 2 1/2 M X F BUSHING BLK/MAL | 77894245227 | 12 | 24 | \$308.17 |
| 451037361 | 3 1/2 X 3 M X F BUSHING BLK/MAL | 77894245624 | 8 | 16 | \$791.78 |
| 451037417 | 4 X 1 M X F BUSHING BLK/MAL | 77894245626 | 5 | 10 | \$578.30 |
| 451037419 | 4 X 1 1/2 M X F BUSHING BLK/MAL | 77894245527 | 5 | 10 | \$578.30 |
| 451037420 | 4 X 2 M X F BUSHING BLK/MAL | 77894245228 | 5 | 10 | \$578.30 |
| 451037421 | 4 X 2 1/2 M X F BUSHING BLK/MAL | 77894245229 | 5 | 10 | \$578.30 |
| 451037422 | 4 X 3 M X F BUSHING BLK/MAL | 77894245230 | 5 | 10 | \$578.30 |
| 451037524 | 5 X 4 M X F BUSHING BLK/MAL | 77894245628 | 2 | 4 | \$1,339.78 |
| 451037622 | 6 X 3 M X F BUSHING BLK/MAL | 77894245418 | 2 | 4 | \$1,579.94 |
| 451037623 | 6 X 4 M X F BUSHING BLK/MAL | 77894245231 | 2 | 4 | \$1,579.94 |
| 451037624 | 6 X 5 M X F BUSHING BLK/MAL | 77894245630 | 2 | 4 | \$1,579.94 |

MIP Plug (Solid) Black



| CB Supplies Part # | Description | UPC Code | Inner | Master | List Price |
|--------------------|------------------------------|-------------|-------|--------|------------|
| 451042000 | 1/8 MIP PLUG (SOLID) BLK/MAL | 77894245232 | 300 | 3600 | \$33.13 |
| 451042002 | 1/4 MIP PLUG (SOLID) BLK/MAL | 77894245233 | 150 | 1800 | \$33.13 |
| 451042004 | 3/8 MIP PLUG (SOLID) BLK/MAL | 77894245234 | 100 | 1200 | \$33.13 |

MIP Plug (Cored) Black



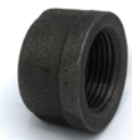
| CB Supplies Part # | Description | UPC Code | Inner | Master | List Price |
|--------------------|--------------------------------|-------------|-------|--------|------------|
| 451042005 | 1/2 MIP PLUG (CORED) BLK/MAL | 77894245235 | 50 | 600 | \$26.14 |
| 451042007 | 3/4 MIP PLUG (CORED) BLK/MAL | 77894245236 | 30 | 360 | \$33.72 |
| 451042010 | 1 MIP PLUG (CORED) BLK/MAL | 77894245237 | 20 | 240 | \$34.87 |
| 451042012 | 1 1/4 MIP PLUG (CORED) BLK/MAL | 77894245238 | 40 | 120 | \$52.29 |
| 451042015 | 1 1/2 MIP PLUG (CORED) BLK/MAL | 77894245239 | 30 | 90 | \$60.97 |
| 451042020 | 2 MIP PLUG (CORED) BLK/MAL | 77894245240 | 20 | 60 | \$87.12 |
| 451042025 | 2 1/2 MIP PLUG (CORED) BLK/MAL | 77894245241 | 16 | 32 | \$193.02 |
| 451042030 | 3 MIP PLUG (CORED) BLK/MAL | 77894245242 | 16 | 32 | \$269.92 |
| 451042040 | 4 MIP PLUG (CORED) BLK/MAL | 77894245244 | 6 | 12 | \$481.88 |
| 451042060 | 6 MIP PLUG (CORED) BLK/MAL | 77894245245 | 5 | 10 | \$1,579.94 |

MIP Plug (Solid) Black



| CB Supplies Part # | Description | UPC Code | Inner | Master | List Price |
|--------------------|----------------------------|-------------|-------|--------|------------|
| 451043010 | 1 MIP PLUG (SOLID) BLK/MAL | 77894245246 | 50 | 600 | \$25.94 |

FIP Cap Black



| CB Supplies Part # | Description | UPC Code | Inner | Master | List Price |
|--------------------|-----------------------|-------------|-------|--------|------------|
| 451047000 | 1/8 FIP CAP BLK/MAL | 77894245247 | 120 | 1440 | \$27.09 |
| 451047002 | 1/4 FIP CAP BLK/MAL | 77894245248 | 80 | 960 | \$27.09 |
| 451047004 | 3/8 FIP CAP BLK/MAL | 77894245249 | 60 | 720 | \$27.09 |
| 451047005 | 1/2 FIP CAP BLK/MAL | 77894245250 | 75 | 300 | \$24.45 |
| 451047007 | 3/4 FIP CAP BLK/MAL | 77894245251 | 40 | 160 | \$29.75 |
| 451047010 | 1 FIP CAP BLK/MAL | 77894245252 | 25 | 100 | \$41.68 |
| 451047012 | 1 1/4 FIP CAP BLK/MAL | 77894245253 | 20 | 80 | \$60.97 |
| 451047015 | 1 1/2 FIP CAP BLK/MAL | 77894245254 | 18 | 54 | \$79.93 |
| 451047020 | 2 FIP CAP BLK/MAL | 77894245255 | 12 | 36 | \$110.99 |
| 451047025 | 2 1/2 FIP CAP BLK/MAL | 77894245256 | 20 | 40 | \$250.97 |
| 451047030 | 3 FIP CAP BLK/MAL | 77894245257 | 12 | 24 | \$347.01 |
| 451047040 | 4 FIP CAP BLK/MAL | 77894245259 | 6 | 12 | \$578.30 |
| 451047060 | 6 FIP CAP BLK/MAL | 77894245261 | 2 | 4 | \$2,211.85 |

FIP Floor Flange Black



| CB Supplies Part # | Description | UPC Code | Inner | Master | List Price |
|--------------------|--------------------------------|-------------|-------|--------|------------|
| 451057004 | 3/8 FIP FLOOR FLANGE BLK/MAL | 77894245262 | 25 | 75 | \$97.73 |
| 451057005 | 1/2 FIP FLOOR FLANGE BLK/MAL | 77894245263 | 25 | 50 | \$100.20 |
| 451057007 | 3/4 FIP FLOOR FLANGE BLK/MAL | 77894245264 | 15 | 45 | \$139.01 |
| 451057010 | 1 FIP FLOOR FLANGE BLK/MAL | 77894245265 | 15 | 30 | \$162.15 |
| 451057012 | 1 1/4 FIP FLOOR FLANGE BLK/MAL | 77894245266 | 10 | 30 | \$231.08 |
| 451057015 | 1 1/2 FIP FLOOR FLANGE BLK/MAL | 77894245267 | 8 | 24 | \$269.92 |
| 451057020 | 2 FIP FLOOR FLANGE BLK/MAL | 77894245268 | 8 | 16 | \$327.51 |

FIP Cross (Double Tee) Black



| CB Supplies Part # | Description | UPC Code | Inner | Master | List Price |
|--------------------|--------------------------------------|-------------|-------|--------|------------|
| 451072000 | 1/8 FIP CROSS (DOUBLE TEE) BLK/MAL | 77894245787 | 30 | 180 | \$96.79 |
| 451072002 | 1/4 FIP CROSS (DOUBLE TEE) BLK/MAL | 77894245528 | 40 | 240 | \$96.79 |
| 451072004 | 3/8 FIP CROSS (DOUBLE TEE) BLK/MAL | 77894245631 | 25 | 150 | \$96.79 |
| 451072005 | 1/2 FIP CROSS (DOUBLE TEE) BLK/MAL | 77894245271 | 30 | 90 | \$96.79 |
| 451072007 | 3/4 FIP CROSS (DOUBLE TEE) BLK/MAL | 77894245272 | 20 | 60 | \$135.24 |
| 451072010 | 1 FIP CROSS (DOUBLE TEE) BLK/MAL | 77894245273 | 15 | 30 | \$183.55 |
| 451072012 | 1 1/4 FIP CROSS (DOUBLE TEE) BLK/MAL | 77894245274 | 10 | 20 | \$270.50 |
| 451072015 | 1 1/2 FIP CROSS (DOUBLE TEE) BLK/MAL | 77894245275 | 8 | 16 | \$367.28 |
| 451072020 | 2 FIP CROSS (DOUBLE TEE) BLK/MAL | 77894245276 | 5 | 10 | \$502.52 |
| 451072025 | 2 1/2 FIP CROSS (DOUBLE TEE) BLK/MAL | 77894245419 | 3 | 6 | \$1,092.97 |
| 451072040 | 4 FIP CROSS (DOUBLE TEE) BLK/MAL | 77894245632 | 2 | 4 | \$2,882.19 |

Lateral Wye Black



| CB Supplies Part # | Description | UPC Code | Inner | Master | List Price |
|--------------------|-------------------------|-------------|-------|--------|------------|
| 451077007 | 3/4 LATERAL WYE BLK/MAL | 77894245788 | 20 | 40 | \$186.95 |
| 451077010 | 1 LATERAL WYE BLK/MAL | 77894245767 | 10 | 20 | \$267.67 |
| 451077020 | 2 LATERAL WYE BLK/MAL | 77894245529 | 3 | 6 | \$1,061.13 |

FIP Union Black



| CB Supplies Part # | Description | UPC Code | Inner | Master | List Price |
|--------------------|-------------------------|-------------|-------|--------|------------|
| 451094000 | 1/8 FIP UNION BLK/MAL | 77894245278 | 60 | 240 | \$173.51 |
| 451094002 | 1/4 FIP UNION BLK/MAL | 77894245279 | 20 | 240 | \$173.51 |
| 451094004 | 3/8 FIP UNION BLK/MAL | 77894245280 | 40 | 160 | \$173.51 |
| 451094005 | 1/2 FIP UNION BLK/MAL | 77894245281 | 50 | 100 | \$156.27 |
| 451094007 | 3/4 FIP UNION BLK/MAL | 77894245282 | 35 | 70 | \$199.84 |
| 451094010 | 1 FIP UNION BLK/MAL | 77894245283 | 20 | 40 | \$234.90 |
| 451094012 | 1 1/4 FIP UNION BLK/MAL | 77894245284 | 15 | 30 | \$312.92 |
| 451094015 | 1 1/2 FIP UNION BLK/MAL | 77894245285 | 10 | 20 | \$416.90 |
| 451094020 | 2 FIP UNION BLK/MAL | 77894245286 | 6 | 12 | \$625.48 |
| 451094025 | 2 1/2 FIP UNION BLK/MAL | 77894245287 | 4 | 8 | \$1,156.59 |
| 451094030 | 3 FIP UNION BLK/MAL | 77894245288 | 4 | 8 | \$1,927.53 |
| 451094040 | 4 FIP UNION BLK/MAL | 77894245422 | 2 | 4 | \$3,823.44 |

FIP Tee Galvanized



| CB Supplies Part # | Description | UPC Code | Inner | Master | List Price |
|--------------------|-----------------------|-------------|-------|--------|------------|
| 452001000 | 1/8 FIP TEE GLV/MAL | 77894245638 | 120 | 480 | \$58.33 |
| 452001002 | 1/4 FIP TEE GLV/MAL | 77894245289 | 75 | 300 | \$58.33 |
| 452001005 | 1/2 FIP TEE GLV/MAL | 77894245291 | 40 | 120 | \$48.69 |
| 452001007 | 3/4 FIP TEE GLV/MAL | 77894245292 | 35 | 70 | \$69.89 |
| 452001010 | 1 FIP TEE GLV/MAL | 77894245293 | 20 | 40 | \$110.06 |
| 452001012 | 1 1/4 FIP TEE GLV/MAL | 77894245294 | 14 | 28 | \$164.98 |
| 452001015 | 1 1/2 FIP TEE GLV/MAL | 77894245295 | 12 | 24 | \$211.77 |
| 452001020 | 2 FIP TEE GLV/MAL | 77894245296 | 8 | 16 | \$317.48 |
| 452001025 | 2 1/2 FIP TEE GLV/MAL | 77894245297 | 4 | 8 | \$745.18 |
| 452001030 | 3 FIP TEE GLV/MAL | 77894245298 | 6 | 6 | \$977.96 |
| 452001040 | 4 FIP TEE GLV/MAL | 77894245299 | 2 | 2 | \$1,769.58 |

Reducing FIP Tee Galvanized



| CB Supplies Part # | Description | UPC Code | Inner | Master | List Price |
|--------------------|---------------------------------------|-------------|-------|--------|------------|
| 452001072 | 1/2 X 1/4 FIP TEE GLV/MAL | 77894245640 | 40 | 160 | \$78.99 |
| 452001090 | 3/4 X 1/2 X 1/2 FIP TEE GLV/MAL | 77894245423 | 25 | 100 | \$95.47 |
| 452001092 | 3/4 X 1/2 X 3/4 FIP TEE GLV/MAL | 77894245505 | 20 | 80 | \$95.47 |
| 452001101 | 3/4 X 1/2 FIP TEE GLV/MAL | 77894245300 | 20 | 80 | \$104.18 |
| 452001122 | 1 X 1/2 X 1 FIP TEE GLV/MAL | 77894245533 | 15 | 60 | \$146.82 |
| 452001125 | 1 X 3/4 X 3/4 FIP TEE GLV/MAL | 77894245506 | 15 | 60 | \$146.82 |
| 452001126 | 1 X 3/4 X 1 FIP TEE GLV/MAL | 77894245507 | 15 | 60 | \$146.82 |
| 452001130 | 1 X 1/2 FIP TEE GLV/MAL | 77894245424 | 15 | 60 | \$133.55 |
| 452001131 | 1 X 3/4 FIP TEE GLV/MAL | 77894245425 | 12 | 48 | \$133.55 |
| 452001160 | 1 1/4 X 1 X 3/4 FIP TEE GLV/MAL | 77894245549 | 20 | 40 | \$221.23 |
| 452001162 | 1 1/4 X 1 X 1 1/4 FIP TEE GLV/MAL | 77894245550 | 15 | 30 | \$221.23 |
| 452001166 | 1 1/4 X 1/2 FIP TEE GLV/MAL | 77894245428 | 20 | 40 | \$221.23 |
| 452001167 | 1 1/4 X 3/4 FIP TEE GLV/MAL | 77894245429 | 20 | 40 | \$221.23 |
| 452001168 | 1 1/4 X 1 FIP TEE GLV/MAL | 77894245430 | 20 | 40 | \$221.23 |
| 452001198 | 1 1/2 X 3/4 X 1 1/2 FIP TEE GLV/MAL | 77894245655 | 12 | 24 | \$280.15 |
| 452001201 | 1 1/2 X 1 X 1 FIP TEE GLV/MAL | 77894245656 | 15 | 30 | \$280.15 |
| 452001207 | 1 1/2 X 1 1/4 X 1 1/4 FIP TEE GLV/MAL | 77894245660 | 12 | 24 | \$280.15 |
| 452001212 | 1 1/2 X 1/2 FIP TEE GLV/MAL | 77894245432 | 18 | 36 | \$280.15 |
| 452001213 | 1 1/2 X 3/4 FIP TEE GLV/MAL | 77894245433 | 15 | 30 | \$280.15 |
| 452001214 | 1 1/2 X 1 FIP TEE GLV/MAL | 77894245434 | 10 | 30 | \$280.15 |

Reducing FIP Tee Galvanized



| CB Supplies Part # | Description | UPC Code | Inner | Master | List Price |
|--------------------|-------------------------------|-------------|-------|--------|------------|
| 452001233 | 2 X 1 X 2 FIP TEE GLV/MAL | 77894245536 | 8 | 16 | \$395.89 |
| 452001243 | 2 X 1 1/2 X 1 FIP TEE GLV/MAL | 77894245664 | 10 | 20 | \$395.89 |
| 452001250 | 2 X 1/2 FIP TEE GLV/MAL | 77894245436 | 10 | 20 | \$395.89 |
| 452001251 | 2 X 3/4 FIP TEE GLV/MAL | 77894245301 | 10 | 20 | \$359.89 |
| 452001252 | 2 X 1 FIP TEE GLV/MAL | 77894245437 | 10 | 20 | \$359.89 |
| 452001253 | 2 X 1 1/4 FIP TEE GLV/MAL | 77894245438 | 8 | 16 | \$395.89 |
| 452001254 | 2 X 1 1/2 FIP TEE GLV/MAL | 77894245439 | 8 | 16 | \$395.89 |
| 452001337 | 3 X 1 1/2 FIP TEE GLV/MAL | 77894245669 | | | \$1,167.02 |
| 452001338 | 3 X 2 FIP TEE GLV/MAL | 77894245441 | 3 | 6 | \$1,167.02 |
| 452001422 | 4 X 3 FIP TEE GLV/MAL | 77894245774 | 2 | 2 | \$2,217.34 |

FIP 90 Elbow Galvanized



| CB Supplies Part # | Description | UPC Code | Inner | Master | List Price |
|--------------------|--------------------------------|-------------|-------|--------|------------|
| 452006000 | 1/8 FIP 90 ELBOW GLV/MAL | 77894245395 | 50 | 600 | \$46.59 |
| 452006002 | 1/4 FIP 90 ELBOW GLV/MAL | 77894245302 | 35 | 420 | \$46.59 |
| 452006004 | 3/8 FIP 90 ELBOW GLV/MAL | 77894245303 | 90 | 360 | \$46.59 |
| 452006005 | 1/2 FIP 90 ELBOW GLV/MAL | 77894245304 | 50 | 200 | \$38.25 |
| 452006007 | 3/4 FIP 90 ELBOW GLV/MAL | 77894245305 | 35 | 105 | \$55.13 |
| 452006010 | 1 FIP 90 ELBOW GLV/MAL | 77894245306 | 20 | 60 | \$84.85 |
| 452006012 | 1 1/4 FIP 90 ELBOW GLV/MAL | 77894245307 | 20 | 40 | \$127.10 |
| 452006015 | 1 1/2 FIP 90 ELBOW GLV/MAL | 77894245308 | 15 | 30 | \$169.34 |
| 452006020 | 2 FIP 90 ELBOW GLV/MAL | 77894245309 | 8 | 16 | \$254.02 |
| 452006025 | 2 1/2 FIP 90 ELBOW GLV/MAL | 77894245310 | 12 | 12 | \$488.88 |
| 452006030 | 3 FIP 90 ELBOW GLV/MAL | 77894245311 | 8 | 8 | \$745.18 |
| 452006031 | 1/4 X 1/8 FIP 90 ELBOW GLV/MAL | 77894245671 | 40 | 480 | \$67.44 |
| 452006040 | 4 FIP 90 ELBOW GLV/MAL | 77894245312 | 2 | 2 | \$1,350.56 |

Reducing FIP 90 Elbow Galvanized



| CB Supplies Part # | Description | UPC Code | Inner | Master | List Price |
|--------------------|------------------------------------|-------------|-------|--------|------------|
| 452006072 | 1/2 X 1/4 FIP 90 ELBOW GLV/MAL | 77894245537 | 60 | 240 | \$51.34 |
| 452006074 | 1/2 X 3/8 FIP 90 ELBOW GLV/MAL | 77894245675 | 60 | 240 | \$51.34 |
| 452006101 | 3/4 X 1/2 FIP 90 ELBOW GLV/MAL | 77894245442 | 40 | 160 | \$67.44 |
| 452006130 | 1 X 1/2 FIP 90 ELBOW GLV/MAL | 77894245313 | 25 | 100 | \$102.66 |
| 452006131 | 1 X 3/4 FIP 90 ELBOW GLV/MAL | 77894245443 | 50 | 100 | \$102.66 |
| 452006166 | 1 1/4 X 1/2 FIP 90 ELBOW GLV/MAL | 77894245538 | 20 | 80 | \$165.17 |
| 452006168 | 1 1/4 X 1 FIP 90 ELBOW GLV/MAL | 77894245552 | 10 | 40 | \$165.17 |
| 452006214 | 1 1/2 X 1 FIP 90 ELBOW GLV/MAL | 77894245540 | 10 | 40 | \$204.76 |
| 452006215 | 1 1/2 X 1 1/4 FIP 90 ELBOW GLV/MAL | 77894245444 | 15 | 30 | \$204.76 |
| 452006254 | 2 X 1 1/2 FIP 90 ELBOW GLV/MAL | 77894245445 | 10 | 20 | \$303.82 |
| 452006292 | 2 1/2 X 2 FIP 90 ELBOW GLV/MAL | 77894245686 | 6 | 12 | \$765.24 |
| 452006339 | 3 X 2 1/2 FIP 90 ELBOW GLV/MAL | 77894245688 | 4 | 8 | \$1,739.05 |

M X F 90 Street Elbow Galvanize



| CB Supplies Part # | Description | UPC Code | Inner | Master | List Price |
|--------------------|-------------------------------------|-------------|-------|--------|------------|
| 452009000 | 1/8 M X F 90 STREET ELBOW GLV/MAL | 77894245692 | 60 | 720 | \$51.34 |
| 452009002 | 1/4 M X F 90 STREET ELBOW GLV/MAL | 77894245314 | 35 | 420 | \$51.34 |
| 452009004 | 3/8 M X F 90 STREET ELBOW GLV/MAL | 77894245315 | 60 | 240 | \$51.34 |
| 452009005 | 1/2 M X F 90 STREET ELBOW GLV/MAL | 77894245316 | 60 | 180 | \$46.59 |
| 452009007 | 3/4 M X F 90 STREET ELBOW GLV/MAL | 77894245317 | 35 | 105 | \$67.44 |
| 452009010 | 1 M X F 90 STREET ELBOW GLV/MAL | 77894245318 | 45 | 90 | \$100.39 |
| 452009012 | 1 1/4 M X F 90 STREET ELBOW GLV/MAL | 77894245319 | 25 | 50 | \$174.83 |
| 452009015 | 1 1/2 M X F 90 STREET ELBOW GLV/MAL | 77894245320 | 9 | 27 | \$214.41 |
| 452009020 | 2 M X F 90 STREET ELBOW GLV/MAL | 77894245321 | 8 | 16 | \$302.88 |
| 452009025 | 2 1/2 M X F 90 STREET ELBOW GLV/MAL | 77894245322 | 5 | 10 | \$675.26 |
| 452009030 | 3 M X F 90 STREET ELBOW GLV/MAL | 77894245446 | 8 | 8 | \$1,047.87 |
| 452009040 | 4 M X F 90 STREET ELBOW GLV/MAL | 77894245693 | 4 | 4 | \$1,746.47 |

FIP 45 Elbow Galvanize



| CB Supplies Part # | Description | UPC Code | Inner | Master | List Price |
|--------------------|----------------------------|-------------|-------|--------|------------|
| 452017000 | 1/8 FIP 45 ELBOW GLV/MAL | 77894245694 | 50 | 600 | \$51.34 |
| 452017002 | 1/4 FIP 45 ELBOW GLV/MAL | 77894245323 | 30 | 360 | \$51.34 |
| 452017004 | 3/8 FIP 45 ELBOW GLV/MAL | 77894245324 | 75 | 300 | \$51.34 |
| 452017005 | 1/2 FIP 45 ELBOW GLV/MAL | 77894245325 | 50 | 200 | \$38.25 |
| 452017007 | 3/4 FIP 45 ELBOW GLV/MAL | 77894245326 | 40 | 120 | \$57.01 |
| 452017010 | 1 FIP 45 ELBOW GLV/MAL | 77894245327 | 20 | 60 | \$84.85 |
| 452017012 | 1 1/4 FIP 45 ELBOW GLV/MAL | 77894245328 | 20 | 40 | \$137.72 |
| 452017015 | 1 1/2 FIP 45 ELBOW GLV/MAL | 77894245329 | 10 | 30 | \$169.34 |
| 452017020 | 2 FIP 45 ELBOW GLV/MAL | 77894245330 | 12 | 24 | \$254.02 |
| 452017025 | 2 1/2 FIP 45 ELBOW GLV/MAL | 77894245331 | 12 | 12 | \$582.29 |
| 452017030 | 3 FIP 45 ELBOW GLV/MAL | 77894245332 | 10 | 10 | \$885.16 |
| 452017040 | 4 FIP 45 ELBOW GLV/MAL | 77894245333 | 4 | 4 | \$1,513.25 |

M X F 45 Street Elbow Galvanized



| CB Supplies Part # | Description | UPC Code | Inner | Master | List Price |
|--------------------|-------------------------------------|-------------|-------|--------|------------|
| 452018000 | 1/8 M X F 45 STREET ELBOW GLV/MAL | 77894245695 | 70 | 840 | \$86.77 |
| 452018005 | 1/2 M X F 45 STREET ELBOW GLV/MAL | 77894245336 | 75 | 225 | \$69.89 |
| 452018007 | 3/4 M X F 45 STREET ELBOW GLV/MAL | 77894245337 | 40 | 120 | \$107.03 |
| 452018010 | 1 M X F 45 STREET ELBOW GLV/MAL | 77894245338 | 25 | 75 | \$142.07 |
| 452018012 | 1 1/4 M X F 45 STREET ELBOW GLV/MAL | 77894245339 | 10 | 40 | \$232.80 |
| 452018020 | 2 M X F 45 STREET ELBOW GLV/MAL | 77894245341 | 12 | 24 | \$465.79 |

FIP Coupling Galvanized



| CB Supplies Part # | Description | UPC Code | Inner | Master | List Price |
|--------------------|--------------------------------|-------------|-------|--------|------------|
| 452029000 | 1/8 FIP COUPLING GLV/MAL | 77894245696 | 70 | 840 | \$35.03 |
| 452029002 | 1/4 FIP COUPLING GLV/MAL | 77894245343 | 40 | 480 | \$35.03 |
| 452029004 | 3/8 FIP COUPLING GLV/MAL | 77894245344 | 40 | 480 | \$35.03 |
| 452029005 | 1/2 FIP COUPLING GLV/MAL | 77894245345 | 60 | 240 | \$29.75 |
| 452029007 | 3/4 FIP COUPLING GLV/MAL | 77894245346 | 50 | 150 | \$40.17 |
| 452029010 | 1 FIP COUPLING GLV/MAL | 77894245347 | 25 | 100 | \$67.80 |
| 452029012 | 1 1/4 FIP COUPLING GLV/MAL | 77894245348 | 16 | 64 | \$95.28 |
| 452029015 | 1 1/2 FIP COUPLING GLV/MAL | 77894245349 | 18 | 36 | \$116.49 |
| 452029020 | 2 FIP COUPLING GLV/MAL | 77894245350 | 12 | 24 | \$180.14 |
| 452029025 | 2 1/2 FIP COUPLING GLV/MAL | 77894245351 | 8 | 16 | \$349.47 |
| 452029030 | 3 FIP COUPLING GLV/MAL | 77894245352 | 12 | 12 | \$512.01 |
| 452029031 | 1/4 X 1/8 FIP COUPLING GLV/MAL | 77894245448 | 50 | 600 | \$39.97 |
| 452029040 | 4 FIP COUPLING GLV/MAL | 77894245449 | 3 | 6 | \$838.38 |

Reducing FIP Coupling Galvanized



| CB Supplies Part # | Description | UPC Code | Inner | Master | List Price |
|--------------------|------------------------------------|-------------|-------|--------|------------|
| 452029057 | 3/8 X 1/4 FIP COUPLING GLV/MAL | 77894245450 | 30 | 360 | \$39.97 |
| 452029070 | 1/2 X 1/8 FIP COUPLING GLV/MAL | 77894245698 | 75 | 300 | \$39.97 |
| 452029072 | 1/2 X 1/4 FIP COUPLING GLV/MAL | 77894245451 | 75 | 300 | \$39.97 |
| 452029074 | 1/2 X 3/8 FIP COUPLING GLV/MAL | 77894245452 | 60 | 240 | \$39.97 |
| 452029098 | 3/4 X 1/4 FIP COUPLING GLV/MAL | 77894245453 | 45 | 180 | \$56.25 |
| 452029099 | 3/4 X 3/8 FIP COUPLING GLV/MAL | 77894245700 | 45 | 180 | \$56.25 |
| 452029101 | 3/4 X 1/2 FIP COUPLING GLV/MAL | 77894245353 | 60 | 180 | \$50.77 |
| 452029130 | 1 X 1/2 FIP COUPLING GLV/MAL | 77894245354 | 30 | 120 | \$74.44 |
| 452029131 | 1 X 3/4 FIP COUPLING GLV/MAL | 77894245355 | 25 | 100 | \$67.80 |
| 452029166 | 1 1/4 X 1/2 FIP COUPLING GLV/MAL | 77894245454 | 25 | 75 | \$109.48 |
| 452029167 | 1 1/4 X 3/4 FIP COUPLING GLV/MAL | 77894245356 | 25 | 75 | \$109.48 |
| 452029168 | 1 1/4 X 1 FIP COUPLING GLV/MAL | 77894245357 | 15 | 60 | \$109.48 |
| 452029212 | 1 1/2 X 1/2 FIP COUPLING GLV/MAL | 77894245543 | 20 | 60 | \$130.52 |
| 452029213 | 1 1/2 X 3/4 FIP COUPLING GLV/MAL | 77894245396 | 15 | 60 | \$130.52 |
| 452029214 | 1 1/2 X 1 FIP COUPLING GLV/MAL | 77894245455 | 25 | 50 | \$130.52 |
| 452029215 | 1 1/2 X 1 1/4 FIP COUPLING GLV/MAL | 77894245456 | 12 | 48 | \$130.52 |
| 452029250 | 2 X 1/2 FIP COUPLING GLV/MAL | 77894245397 | 12 | 36 | \$198.13 |
| 452029251 | 2 X 3/4 FIP COUPLING GLV/MAL | 77894245457 | 12 | 36 | \$198.13 |
| 452029252 | 2 X 1 FIP COUPLING GLV/MAL | 77894245358 | 12 | 36 | \$198.13 |
| 452029253 | 2 X 1 1/4 FIP COUPLING GLV/MAL | 77894245359 | 9 | 27 | \$198.13 |
| 452029254 | 2 X 1 1/2 FIP COUPLING GLV/MAL | 77894245360 | 9 | 27 | \$198.13 |
| 452029289 | 2 1/2 X 1 FIP COUPLING GLV/MAL | 77894245510 | 10 | 20 | \$372.59 |
| 452029291 | 2 1/2 X 1 1/2 FIP COUPLING GLV/MAL | 77894245544 | 7 | 14 | \$372.59 |
| 452029292 | 2 1/2 X 2 FIP COUPLING GLV/MAL | 77894245458 | 7 | 14 | \$372.59 |
| 452029335 | 3 X 1 FIP COUPLING GLV/MAL | 77894245558 | 6 | 12 | \$582.29 |
| 452029338 | 3 X 2 FIP COUPLING GLV/MAL | 77894245459 | 6 | 12 | \$582.29 |
| 452029339 | 3 X 2 1/2 FIP COUPLING GLV/MAL | 77894245460 | 5 | 10 | \$582.29 |
| 452029420 | 4 X 2 FIP COUPLING GLV/MAL | 77894245511 | 3 | 6 | \$1,073.63 |
| 452029422 | 4 X 3 FIP COUPLING GLV/MAL | 77894245462 | 3 | 6 | \$1,073.63 |

M X F Bushing Galvanized



| CB Supplies Part # | Description | UPC Code | Inner | Master | List Price |
|--------------------|-------------------------------------|-------------|-------|--------|------------|
| 452037031 | 1/4 X 1/8 M X F BUSHING GLV/MAL | 77894245361 | 120 | 1440 | \$77.28 |
| 452037055 | 3/8 X 1/8 M X F BUSHING GLV/MAL | 77894245709 | 75 | 900 | \$77.28 |
| 452037057 | 3/8 X 1/4 M X F BUSHING GLV/MAL | 77894245362 | 75 | 900 | \$77.28 |
| 452037070 | 1/2 X 1/8 M X F BUSHING GLV/MAL | 77894245710 | 150 | 600 | \$35.03 |
| 452037072 | 1/2 X 1/4 M X F BUSHING GLV/MAL | 77894245463 | 150 | 600 | \$35.03 |
| 452037074 | 1/2 X 3/8 M X F BUSHING GLV/MAL | 77894245363 | 150 | 600 | \$35.03 |
| 452037096 | 3/4 X 1/8 M X F BUSHING GLV/MAL | 77894245711 | 75 | 300 | \$50.82 |
| 452037098 | 3/4 X 1/4 M X F BUSHING GLV/MAL | 77894245464 | 75 | 300 | \$39.78 |
| 452037099 | 3/4 X 3/8 M X F BUSHING GLV/MAL | 77894245465 | 75 | 300 | \$39.78 |
| 452037101 | 3/4 X 1/2 M X F BUSHING GLV/MAL | 77894245364 | 75 | 300 | \$39.78 |
| 452037128 | 1 X 1/4 M X F BUSHING GLV/MAL | 77894245466 | 50 | 200 | \$58.33 |
| 452037129 | 1 X 3/8 M X F BUSHING GLV/MAL | 77894245398 | 50 | 200 | \$58.33 |
| 452037130 | 1 X 1/2 M X F BUSHING GLV/MAL | 77894245365 | 50 | 200 | \$52.86 |
| 452037131 | 1 X 3/4 M X F BUSHING GLV/MAL | 77894245366 | 50 | 200 | \$52.86 |
| 452037164 | 1 1/4 X 1/4 M X F BUSHING GLV/MAL | 77894245546 | 30 | 120 | \$93.18 |
| 452037165 | 1 1/4 X 3/8 M X F BUSHING GLV/MAL | 77894245367 | 30 | 120 | \$93.18 |
| 452037166 | 1 1/4 X 1/2 M X F BUSHING GLV/MAL | 77894245399 | 30 | 120 | \$93.18 |
| 452037167 | 1 1/4 X 3/4 M X F BUSHING GLV/MAL | 77894245368 | 30 | 120 | \$93.18 |
| 452037168 | 1 1/4 X 1 M X F BUSHING GLV/MAL | 77894245369 | 30 | 120 | \$84.85 |
| 452037212 | 1 1/2 X 1/2 M X F BUSHING GLV/MAL | 77894245467 | 25 | 75 | \$109.48 |
| 452037213 | 1 1/2 X 3/4 M X F BUSHING GLV/MAL | 77894245370 | 25 | 75 | \$109.48 |
| 452037214 | 1 1/2 X 1 M X F BUSHING GLV/MAL | 77894245371 | 25 | 75 | \$109.48 |
| 452037215 | 1 1/2 X 1 1/4 M X F BUSHING GLV/MAL | 77894245372 | 25 | 75 | \$109.48 |
| 452037249 | 2 X 3/8 M X F BUSHING GLV/MAL | 77894245547 | 20 | 60 | \$151.16 |
| 452037250 | 2 X 1/2 M X F BUSHING GLV/MAL | 77894245716 | 20 | 60 | \$151.16 |
| 452037251 | 2 X 3/4 M X F BUSHING GLV/MAL | 77894245373 | 20 | 60 | \$151.16 |
| 452037252 | 2 X 1 M X F BUSHING GLV/MAL | 77894245374 | 20 | 60 | \$151.16 |
| 452037253 | 2 X 1 1/4 M X F BUSHING GLV/MAL | 77894245375 | 20 | 60 | \$137.72 |
| 452037254 | 2 X 1 1/2 M X F BUSHING GLV/MAL | 77894245376 | 20 | 60 | \$137.72 |
| 452037288 | 2 1/2 X 3/4 M X F BUSHING GLV/MAL | 77894245718 | 15 | 30 | \$256.27 |
| 452037289 | 2 1/2 X 1 M X F BUSHING GLV/MAL | 77894245468 | 15 | 30 | \$256.27 |
| 452037291 | 2 1/2 X 1 1/2 M X F BUSHING GLV/MAL | 77894245469 | 15 | 30 | \$256.27 |
| 452037292 | 2 1/2 X 2 M X F BUSHING GLV/MAL | 77894245470 | 15 | 30 | \$256.27 |
| 452037336 | 3 X 1 1/4 M X F BUSHING GLV/MAL | 77894245562 | 12 | 24 | \$372.59 |
| 452037337 | 3 X 1 1/2 M X F BUSHING GLV/MAL | 77894245471 | 12 | 24 | \$372.59 |
| 452037338 | 3 X 2 M X F BUSHING GLV/MAL | 77894245512 | 12 | 24 | \$372.59 |
| 452037339 | 3 X 2 1/2 M X F BUSHING GLV/MAL | 77894245472 | 12 | 24 | \$372.59 |
| 452037418 | 4 X 1 1/4 M X F BUSHING GLV/MAL | 77894245721 | 3 | 6 | \$698.58 |
| 452037419 | 4 X 1 1/2 M X F BUSHING GLV/MAL | 77894245722 | 5 | 10 | \$698.58 |
| 452037420 | 4 X 2 M X F BUSHING GLV/MAL | 77894245473 | 5 | 10 | \$698.58 |
| 452037422 | 4 X 3 M X F BUSHING GLV/MAL | 77894245475 | 5 | 10 | \$698.58 |
| 452037524 | 5 X 4 M X F BUSHING GLV/MAL | 77894245784 | | | \$1,922.97 |

MIP Plug (Solid) Galvanized



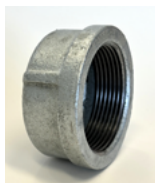
| CB Supplies Part # | Description | UPC Code | Inner | Master | List Price |
|--------------------|------------------------------|-------------|-------|--------|------------|
| 452042000 | 1/8 MIP PLUG (SOLID) GLV/MAL | 77894245724 | 300 | 3600 | \$42.62 |
| 452042002 | 1/4 MIP PLUG (SOLID) GLV/MAL | 77894245377 | 150 | 1800 | \$42.62 |
| 452042004 | 3/8 MIP PLUG (SOLID) GLV/MAL | 77894245378 | 100 | 1200 | \$42.62 |

MIP Plug (Cored) Galvanized



| CB Supplies Part # | Description | UPC Code | Inner | Master | List Price |
|--------------------|--------------------------------|-------------|-------|--------|------------|
| 452042005 | 1/2 MIP PLUG (CORED) GLV/MAL | 77894245379 | 50 | 600 | \$37.13 |
| 452042007 | 3/4 MIP PLUG (CORED) GLV/MAL | 77894245380 | 30 | 360 | \$49.25 |
| 452042010 | 1 MIP PLUG (CORED) GLV/MAL | 77894245381 | 20 | 240 | \$55.70 |
| 452042012 | 1 1/4 MIP PLUG (CORED) GLV/MAL | 77894245382 | 40 | 120 | \$63.66 |
| 452042015 | 1 1/2 MIP PLUG (CORED) GLV/MAL | 77894245383 | 30 | 90 | \$74.07 |
| 452042020 | 2 MIP PLUG (CORED) GLV/MAL | 77894245384 | 20 | 60 | \$106.08 |
| 452042025 | 2 1/2 MIP PLUG (CORED) GLV/MAL | 77894245479 | 16 | 32 | \$232.80 |
| 452042030 | 3 MIP PLUG (CORED) GLV/MAL | 77894245480 | 16 | 32 | \$326.00 |
| 452042040 | 4 MIP PLUG (CORED) GLV/MAL | 77894245481 | 6 | 12 | \$582.29 |

FIP Cap Galvanized



| CB Supplies Part # | Description | UPC Code | Inner | Master | List Price |
|--------------------|-----------------------|-------------|-------|--------|------------|
| 452047000 | 1/8 FIP CAP GLV/MAL | 77894245400 | 120 | 1440 | \$33.13 |
| 452047002 | 1/4 FIP CAP GLV/MAL | 77894245385 | 80 | 960 | \$33.13 |
| 452047004 | 3/8 FIP CAP GLV/MAL | 77894245386 | 60 | 720 | \$33.13 |
| 452047005 | 1/2 FIP CAP GLV/MAL | 77894245387 | 75 | 300 | \$29.75 |
| 452047007 | 3/4 FIP CAP GLV/MAL | 77894245388 | 40 | 160 | \$35.99 |
| 452047010 | 1 FIP CAP GLV/MAL | 77894245389 | 25 | 100 | \$50.77 |
| 452047012 | 1 1/4 FIP CAP GLV/MAL | 77894245390 | 20 | 80 | \$74.07 |
| 452047015 | 1 1/2 FIP CAP GLV/MAL | 77894245391 | 18 | 54 | \$97.54 |
| 452047020 | 2 FIP CAP GLV/MAL | 77894245392 | 12 | 36 | \$135.43 |
| 452047025 | 2 1/2 FIP CAP GLV/MAL | 77894245482 | 20 | 40 | \$302.88 |
| 452047030 | 3 FIP CAP GLV/MAL | 77894245483 | 12 | 24 | \$419.18 |
| 452047040 | 4 FIP CAP GLV/MAL | 77894245484 | 6 | 12 | \$698.58 |
| 452047060 | 6 FIP CAP GLV/MAL | 77894245754 | 2 | 4 | \$2,782.75 |

FIP Floor Flange Galvanized



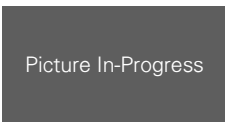
| CB Supplies Part # | Description | UPC Code | Inner | Master | List Price |
|--------------------|--------------------------------|-------------|-------|--------|------------|
| 452057005 | 1/2 FIP FLOOR FLANGE GLV/MAL | 77894245485 | 25 | 50 | \$121.23 |
| 452057007 | 3/4 FIP FLOOR FLANGE GLV/MAL | 77894245486 | 15 | 45 | \$167.81 |
| 452057010 | 1 FIP FLOOR FLANGE GLV/MAL | 77894245487 | 15 | 30 | \$195.69 |
| 452057012 | 1 1/4 FIP FLOOR FLANGE GLV/MAL | 77894245488 | 10 | 30 | \$279.38 |
| 452057015 | 1 1/2 FIP FLOOR FLANGE GLV/MAL | 77894245563 | 8 | 24 | \$326.00 |
| 452057020 | 2 FIP FLOOR FLANGE GLV/MAL | 77894245489 | 8 | 16 | \$395.89 |

FIP Cross (Dbl Tee) Galvanized



| CB Supplies Part # | Description | UPC Code | Inner | Master | List Price |
|--------------------|-----------------------------------|-------------|-------|--------|------------|
| 452072005 | 1/2 FIP CROSS (DBL TEE) GLV/MAL | 77894245490 | 30 | 90 | \$116.87 |
| 452072007 | 3/4 FIP CROSS (DBL TEE) GLV/MAL | 77894245491 | 20 | 60 | \$163.46 |
| 452072010 | 1 FIP CROSS (DBL TEE) GLV/MAL | 77894245492 | 15 | 30 | \$221.63 |
| 452072015 | 1 1/2 FIP CROSS (DBL TEE) GLV/MAL | 77894245727 | 8 | 16 | \$443.63 |
| 452072020 | 2 FIP CROSS (DBL TEE) GLV/MAL | 77894245494 | 5 | 10 | \$606.89 |
| 452072030 | 3 FIP CROSS (DBL TEE) GLV/MAL | 77894245728 | 4 | 8 | \$1,964.85 |

Lateral Wye Galvanized



| CB Supplies Part # | Description | UPC Code | Inner | Master | List Price |
|--------------------|---------------------------|-------------|-------|--------|------------|
| 452077012 | 1 1/4 LATERAL WYE GLV/MAL | 77894245745 | 6 | 12 | \$544.41 |

Lock Nut Galvanized



| CB Supplies Part # | Description | UPC Code | Inner | Master | List Price |
|--------------------|----------------------|-------------|-------|--------|------------|
| 452091002 | 1/4 LOCK NUT GLV/MAL | 77894245729 | 125 | 750 | \$39.97 |
| 452091004 | 3/8 LOCK NUT GLV/MAL | 77894245781 | 125 | 750 | \$39.97 |
| 452091005 | 1/2 LOCK NUT GLV/MAL | 77894245730 | 150 | 600 | \$30.50 |
| 452091007 | 3/4 LOCK NUT GLV/MAL | 77894245731 | 90 | 360 | \$30.50 |
| 452091010 | 1 LOCK NUT GLV/MAL | 77894245782 | 60 | 240 | \$37.68 |

FIP Union Galvanized



| CB Supplies Part # | Description | UPC Code | Inner | Master | List Price |
|--------------------|-------------------------|-------------|-------|--------|------------|
| 452094002 | 1/4 FIP UNION GLV/MAL | 77894245401 | 20 | 240 | \$209.69 |
| 452094004 | 3/8 FIP UNION GLV/MAL | 77894245496 | 40 | 160 | \$209.69 |
| 452094005 | 1/2 FIP UNION GLV/MAL | 77894245513 | 50 | 100 | \$190.55 |
| 452094007 | 3/4 FIP UNION GLV/MAL | 77894245497 | 35 | 70 | \$243.99 |
| 452094010 | 1 FIP UNION GLV/MAL | 77894245394 | 20 | 40 | \$285.84 |
| 452094012 | 1 1/4 FIP UNION GLV/MAL | 77894245498 | 15 | 30 | \$381.48 |
| 452094015 | 1 1/2 FIP UNION GLV/MAL | 77894245499 | 10 | 20 | \$500.06 |
| 452094020 | 2 FIP UNION GLV/MAL | 77894245514 | 6 | 12 | \$761.85 |
| 452094025 | 2 1/2 FIP UNION GLV/MAL | 77894245500 | 4 | 8 | \$1,396.96 |
| 452094030 | 3 FIP UNION GLV/MAL | 77894245501 | 4 | 8 | \$2,325.13 |
| 452094040 | 4 FIP UNION GLV/MAL | 77894245553 | 2 | 4 | \$4,661.06 |